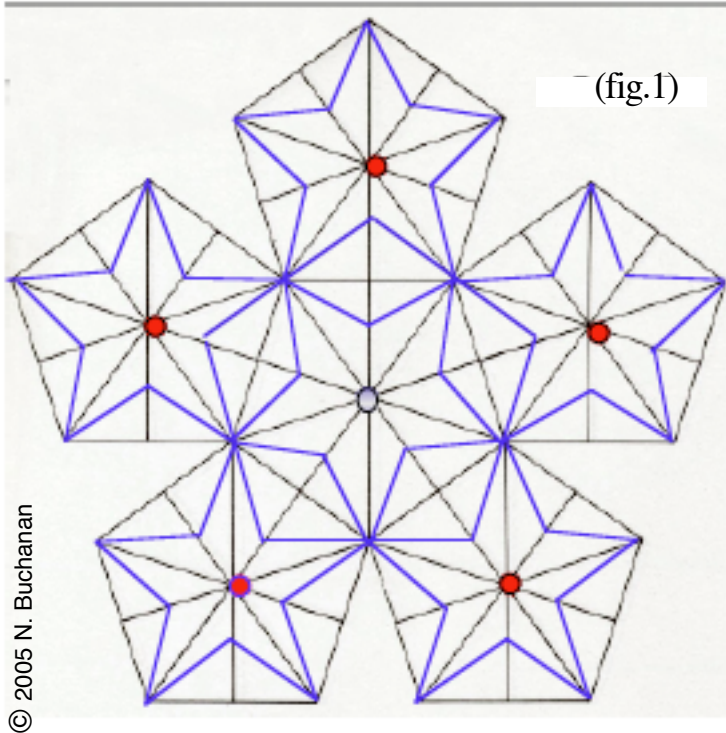


# Hito Hude-Gaki



This pattern has been a perennial favorite at temari gatherings. These instructions were written after I learned the pattern from Sue H., and helped teach it to a group online.

It is recommended that you read the directions completely before starting to stitch as it will give you a very solid idea of what is happening in the design.

This pattern can be stitched on any size mari and looks wonderful in most color combinations. The example is stitched on a 27 cm base wrapped in gold and stitched in purple and green #5 perle cotton.

## The Marking:

Start with a C-10 base and add supporting lines as indicated in blue on the diagram (fig.1). You will be stitching an offset pentagon around each standard pentagon.  
*(Hint: To keep up with which pentagons have been stitched, put a pin in each of the 12 poles when you've completed the larger pentagon around it.)*

## The Pattern:

This pattern is worked in a spiral from pole to pole. You will start at the North pole and stitch around the ball to the South pole, and then stitch back to the North Pole. When you have stitched from North to South and back to North, you will have completed 32 stars. The North and South pole stars are the only ones that will be all one color. The rest of them will be made up of two colors, but the mix will vary.

## The Stitches:

The stars themselves are stitched like a kiku design using the Uwagake Chidori Kagari stitch. The points will interlock between the stars. The trick to working the stars correctly is remembering to take what Sue H. refers to as a "parallel stitch" when moving to the next star.

## The North Pole Star:

Remove any pins you used to keep track of the support lines, but **KEEP THE NORTH AND SOUTH POLE PINS IN.**

Find the star around the NP and stitch a smaller star inside the existing larger one. Start about halfway between the NP and a star point, and stitch the "up" lines as close to the pole as you can get. **STOP** when you get to the last pole stitch, which should leave one leg unstitched.



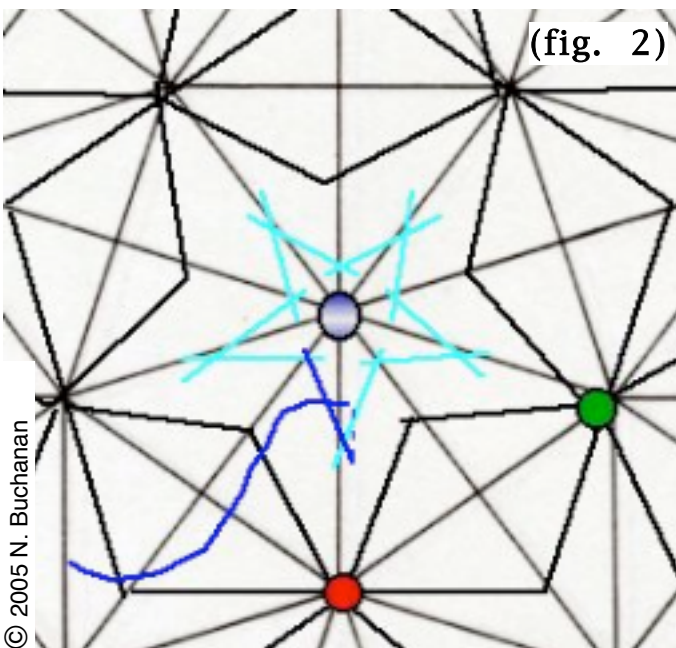
© 2005 N. Buchanan

### The First Parallel Stitch:

For the final leg of the NP star, you will take a stitch parallel to the marking line instead of perpendicular to the star's point. The stitch will be to the right of the marking thread, and enter where you would normally take the next stitch, but exit **inside** the star point (fig. 2).

### The tracking pins:

To help track the stitching path, add a **red** pin to mark the pole directly below the final point of the first star. Now hold the ball so that the NP is on top and the **red** marking pin is facing you. Put a **green** pin in the pole that is directly to the right of the **red** one, and directly below a NP star point. The **red** pin will be the second star's pole, and the **green** one will be the third star's pole. This way, you should be able to keep up with which star you are on, and where you are going next.



© 2005 N. Buchanan

As you finish a star move its pin ahead to the next open pole. You will always move to the next pole that is to the right and as close to the NP as you can go. It may be above, beside or below the current pole, but you should never have an open pole ABOVE where you are stitching.

(Another option is to number the poles according to the chart in fig. 4)

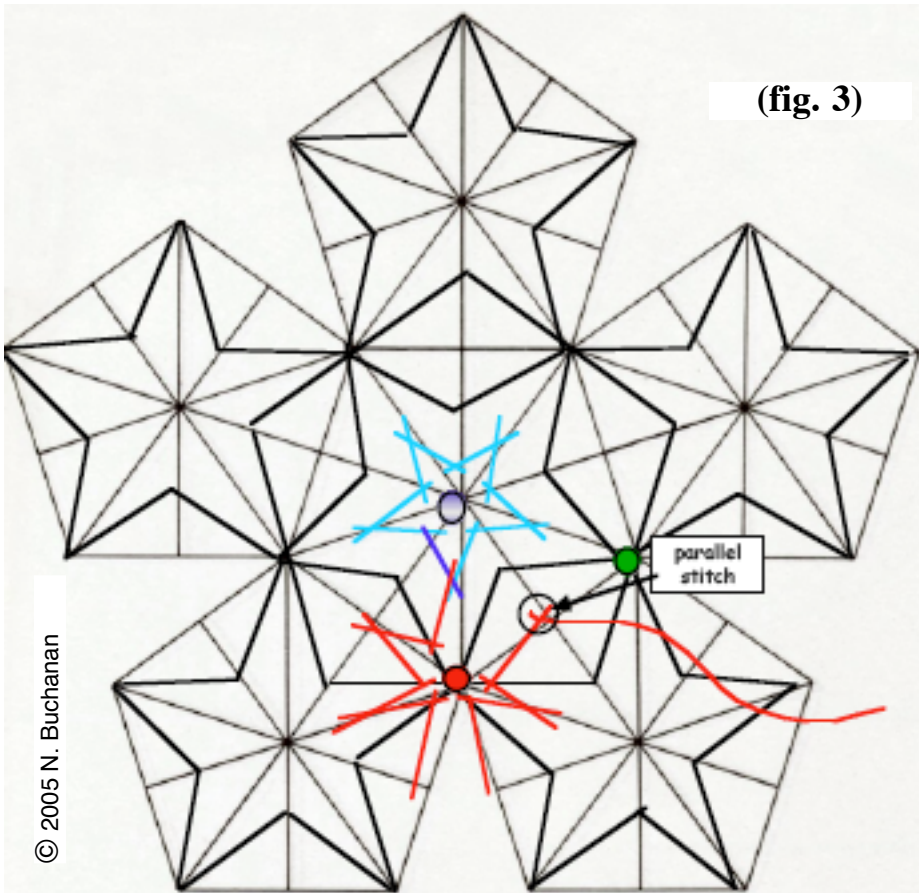
*(Using tracking pins is a useful way to learn how to see the stitching path. After completing a few balls you may find it unnecessary to continue to track your path with pins.)*

### The second star and parallel stitch:

Stitch around the **red** pin in the same way you did the NP. Keep close to the pin on the "ups" and a bit more than halfway between the poles on the points. You will find that some stitches have a handy intersection already marking the stitching points, and others you will just have to eyeball it. "Close enough" works just fine with this pattern!

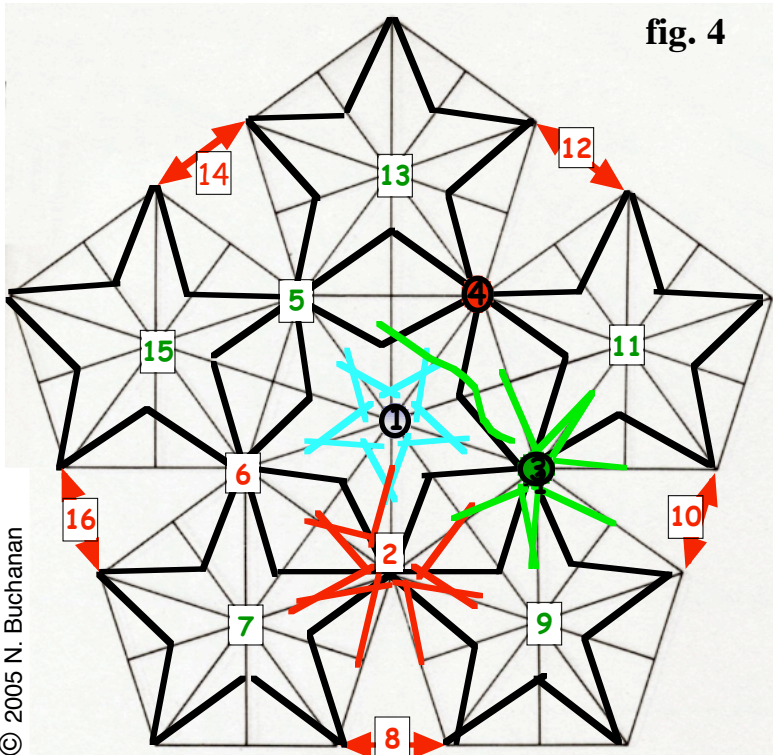
Continue working the star around the **red** pin until you've completed 4 points (don't count the first 1/2 point connecting to the first star.)

Do the next "up" stitch, then do a **parallel** stitch. You should now be properly positioned to stitch the first leg of star #3 around the **green** pin (fig. 3).



© 2005 N. Buchanan

fig. 4



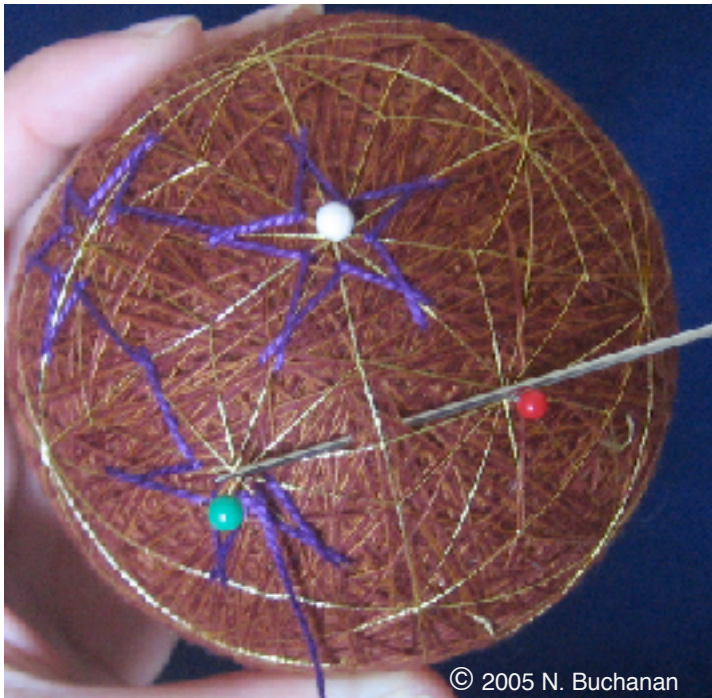
### Stars 3-31:

Move your red pin to the pole that is to the right of the green pin and below a NP star point. (point 4 on fig. 4)

Stitch star 3 around the green pin, and take a parallel stitch when you get to the "down stitch" that will connect it to star 4. Move the green pin to pole 5, then stitch star # 4.

By always keeping a pin where you are and where you are going you will be able to figure out when to do a joining parallel stitch. Your parallel stitch will always be between the tracking pins.

Stitch all the way to star #31, which should leave only the SP pentagon with no stitching around it.



© 2005 N. Buchanan

**Parallel Stitch Between #3 and #4, taken from the red pin toward the green one.**



© 2005 N. Buchanan

**Starting at the South Pole**

### **Beginning The South Pole**

After switching to your second color, pick up your stitching where you left off, and stitch the last star at the south pole.

### **Inside Stitches**

The “down” stitches should be taken *inside* the star points from round one. (See close-up at right.) don’t be afraid to stretch the points, as the “up” stitching will pull the stitches toward the poles.

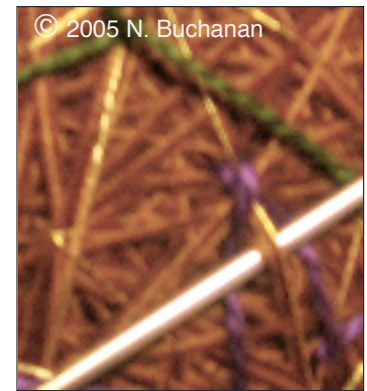
### **Parallel Stitches**

On this round take the parallel stitches *under* the parallel stitches from the first round. (See close-up at right.)

### **Keeping things neat**

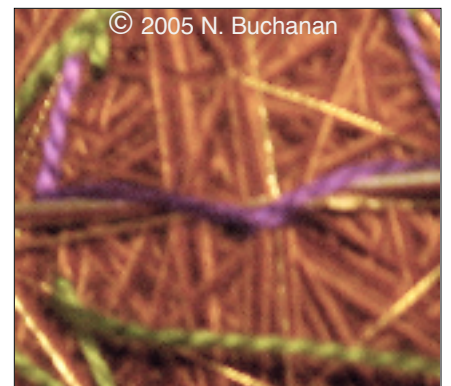
One of the best ways to gauge where to take your “down” stitches is to lay the thread where you want it to be and stitch where it crosses the marking line. Also, stretching the points will help keep things neat and not crowded.

Stop this round when you get back to star #2 *Do not stitch around the North Pole.* You should now have one solid color star at each pole, and one multicolored star at all the other poles.



© 2005 N. Buchanan

**Detail: Inside Stitch**



© 2005 N. Buchanan

**Detail: Parallel Stitch**

## The Remaining Rounds

Switching back to your first color, pick up where you left off and stitch around the North Pole then follow your previous NP stitching around the ball until you get to the South Pole. Continue switching threads at the poles and traveling back and forth around the ball.

## Inside Stitches

The “down” stitches should be taken *inside* the star points from all previous rounds. (See close-up at right.) Don’t be afraid to stretch the points, as the “up” stitching will pull the stitches toward the poles.

## Parallel Stitches

On each round take the parallel stitches *under* the parallel stitches from the previous rounds. (See close-up at right.)

## Are We There Yet?

Keep stitching until you can’t squeeze in any more stitches, or until you achieve a look you are pleased with.

You can make the last row to match all the previous rows, or you can add a metallic or contrasting round to make the stars stand out. (I usually reverse colors for the last rows.)

## Finishing Touches

Go back and comb your stitches with your needle eye to get them to lay flat and correct any out of line threads.



© 2005 N. Buchanan

**Parallel Stitch**



© 2005 N. Buchanan

**Detail: Inside Stitch  
3rd purple round**



© 2005 N. Buchanan

**Detail: Parallel Stitch  
3rd purple round**



© 2005 N. Buchanan

**Finished!**